



Pin Logix

- Logistics Engineering & Design

Self Propelled Barge
Towing(Semi Submersible)



Pin Logix

Professional, Innovation & Networks



Section 1 Introduction

- CEO's greeting

Section 2 Scope of Work

- SCOPE OF WORK
- TARGET OF PIN

Section 3 Performance

- PHOTO GALLERY

Pin Logix



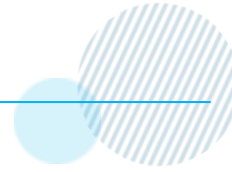
Section 1. INTRODUCTION



Professional, Innovation & Networks

Logistics Engineering & Design

Pin Logix



Throughout the world, Pin Logix aims to maximize customer's opportunities by standardizing logistics data, realizing customers satisfaction through ultimate and accurate quotations, and ultimately securing competitiveness.

PIN stands for **P**rofessional **I**nnovation **N**etworks and will secure competitiveness in various forms of logistics in PIN's specific methods.

Pin Logix will continue to strive for customers satisfaction by building a global network and develop a new logistics system.

We will provide specialized Logistics Service for import & export cargo, bulk cargo, project cargo and marine & shipbuilding related heavy cargo.



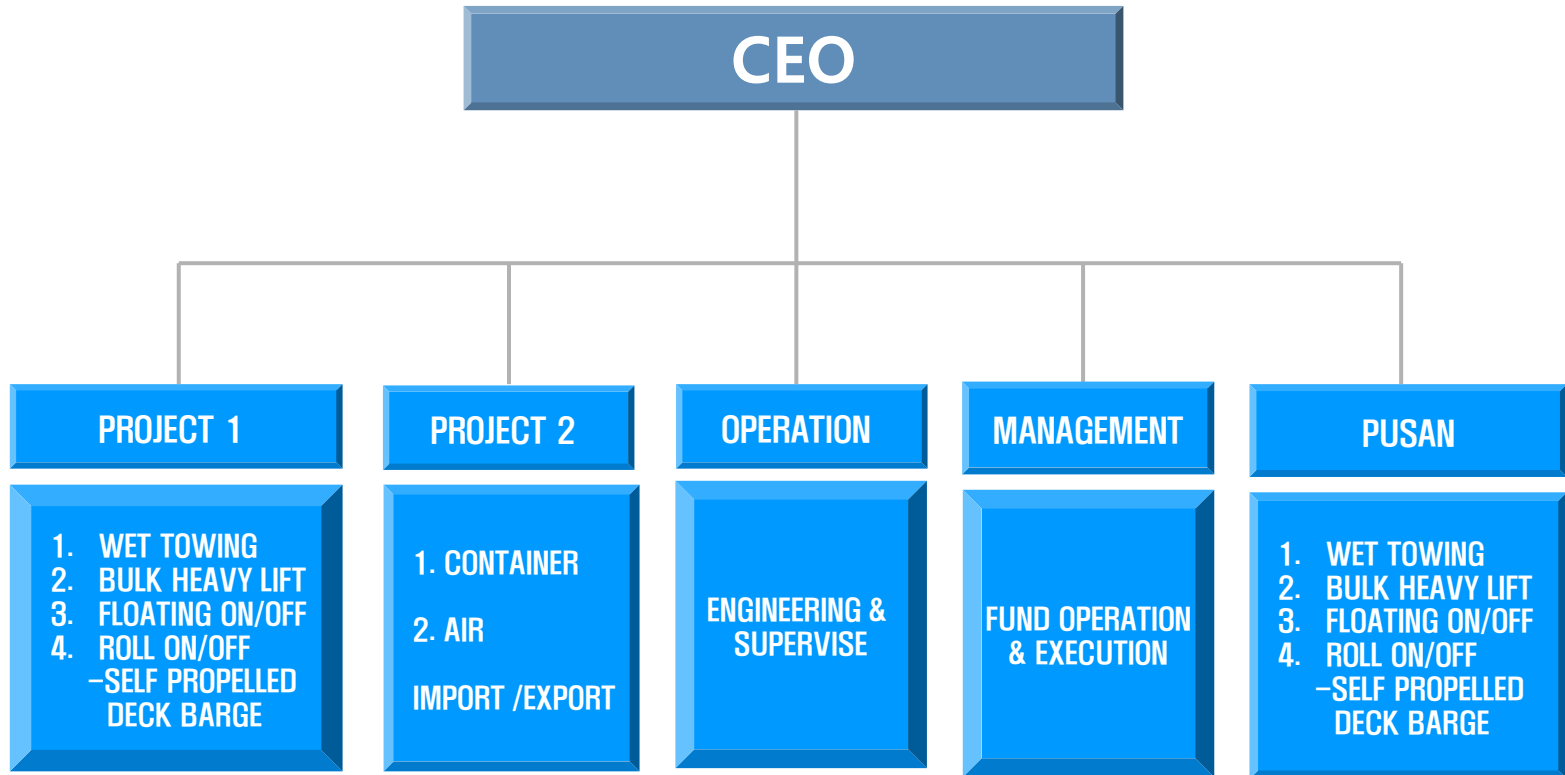
Pin Logix

Justin Do / C.E.O of Pin Logix

Logistics Engineering & Design

ORGANIZATIN CHART

(HEAD OFFICE : SEOUL, BRANCH : PUSAN)



Pin Logix



Section 2. SCOPE OF WORK



Professional, Innovation & Networks

Logistics Engineering & Design

핀의 자원 / SCOPE OF WORK



Pin Logix



Section 3. PERFORMANCE



Professional, Innovation & Networks

Logistics Engineering & Design

BOILER MODULE 500TON TRANSPORT, BALIKPAPAN



Logistics Engineering & Design

RO TRANSPORT – EVAPORATOR



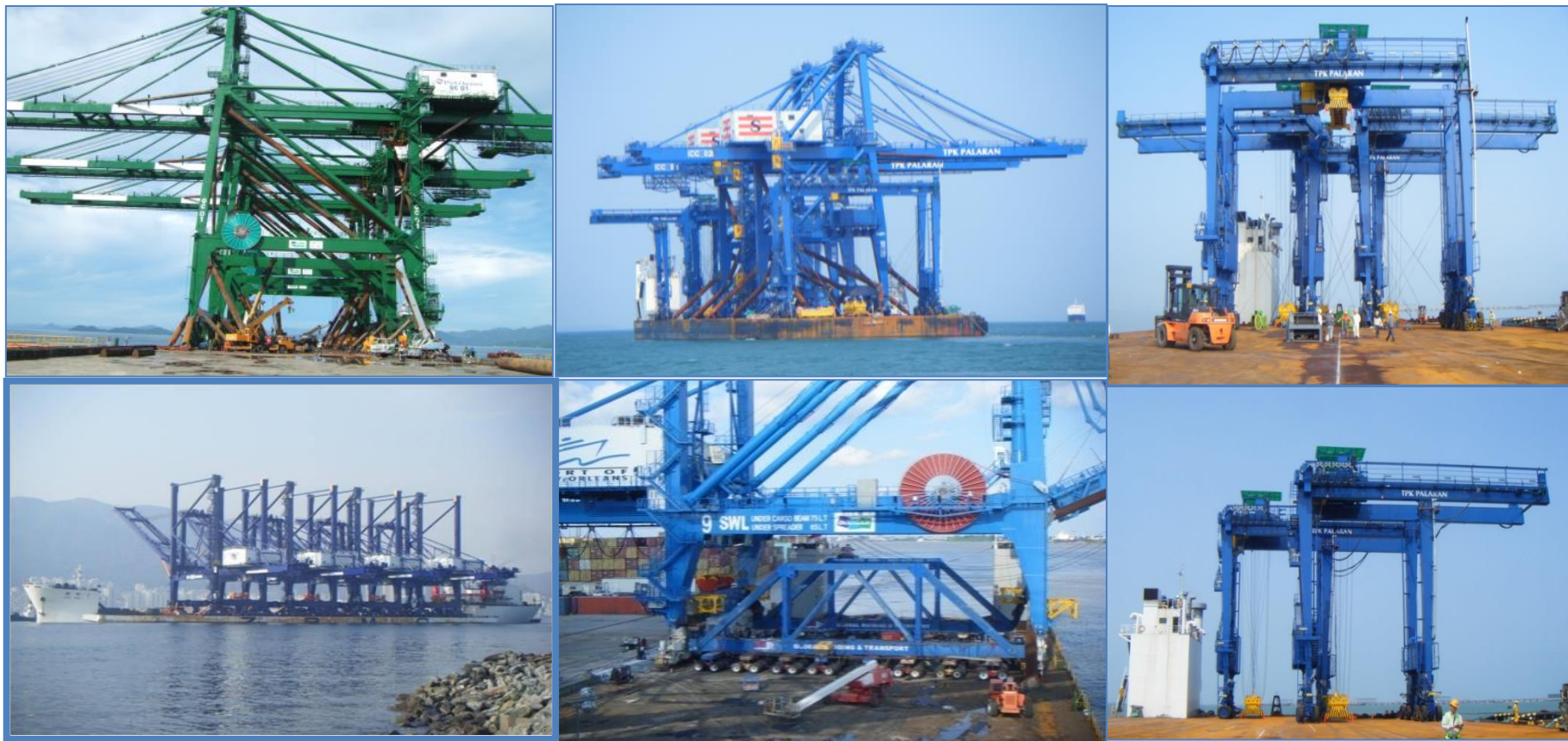
Logistics Engineering & Design

RO TRANSPORT – PORT GANTRY CRANE KNOCKED-DOWN



Logistics Engineering & Design

RO TRANSPORT – RMQC & RTGC



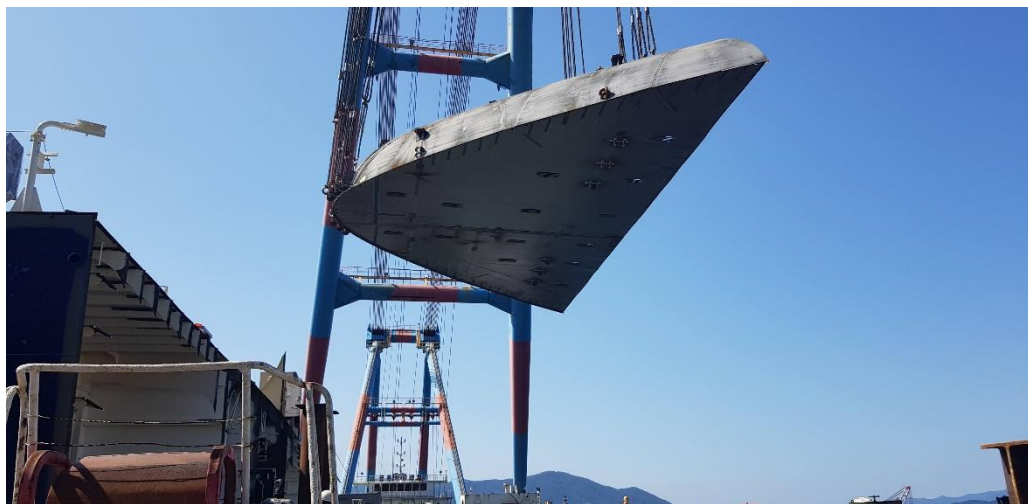
Logistics Engineering & Design

LASHING BRIDGE 100TON/EACH KOREA/JAPN



Logistics Engineering & Design

SHIP BLOCK FROM KOREA TO ZVEZDA SHIPYARD(MAX 900TON)



Logistics Engineering & Design

FLOATING ON/OFF TRANSPORT – MARINE EQUIPMENT

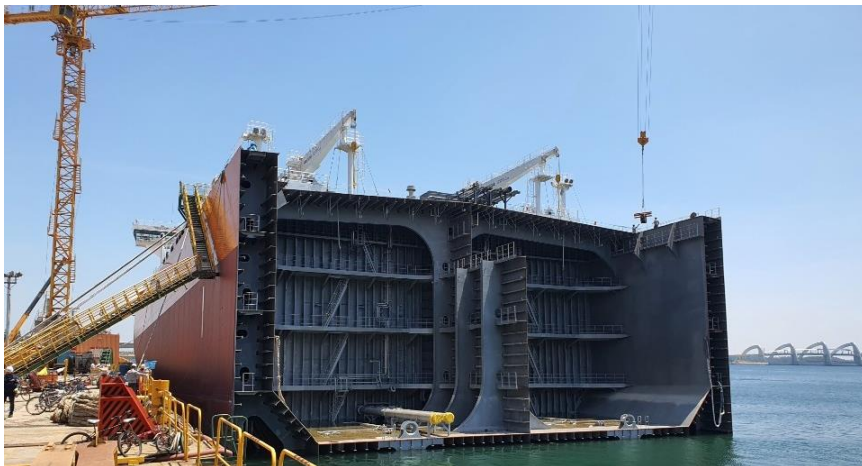


Logistics Engineering & Design

WET TOWING TRANSPORTATION

TUG : 10,657 BHP WITH 143 BPT

HALF SHIP(160M X 44M)
MOKPO TO BOLSHOY CAMEN



Logistics Engineering & Design

TOWING OF HALF SHIP



Logistics Engineering & Design

WET TOWING TRANSPORTATION

TUG : 7,000 BHP

FLOATING DOCK 59M X 50M
GOJE, KOREA TO TAIPEI, TAIWAN



Logistics Engineering & Design

SEMI – SUBMERSIBLE TRANSPORT

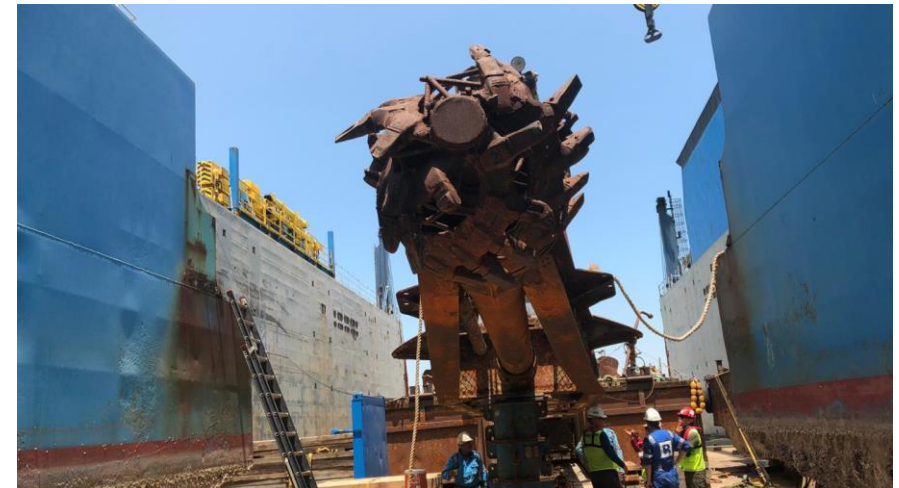
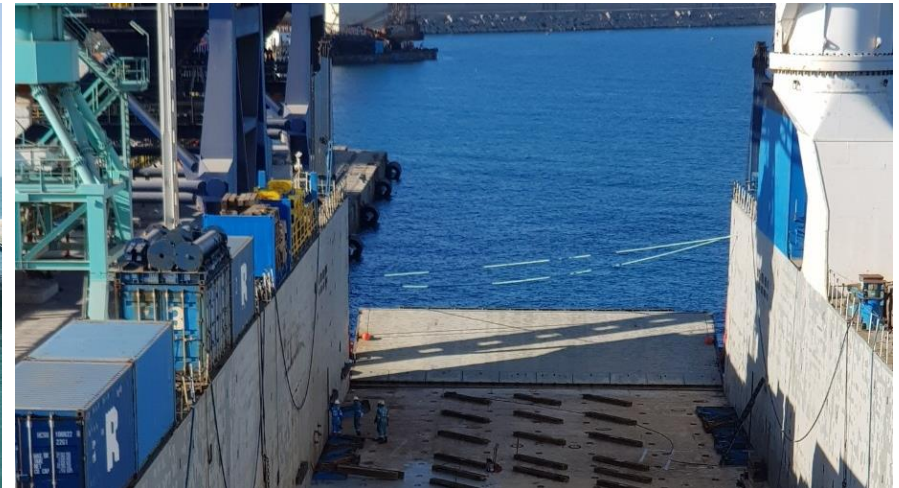
CONSTRUCTION EQUIPMENT
ALGER TO GHANA



Logistics Engineering & Design

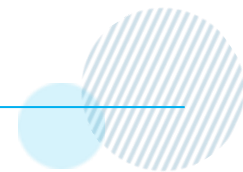
SEMI – SUBMERSIBLE TRANSPORT

CONSTRUCTION EQUIPMENT
DJEN DJEN TO AL FAW, IRAQ



Logistics Engineering & Design

SEMI – SUBMERSIBLE TRANSPORT



DCB BARGE TO HONGKONG



Logistics Engineering & Design

WET TOWING TRANSPORT

TUG : 6,600 BHP

DCM BARGE TO HONG KONG



Logistics Engineering & Design

WET TOWING TRANSPORT (Korea – Vanino,RU) Tug : 5,600HP



Logistics Engineering & Design

SEMI – SUBMERSIBLE TRANSPORT

AFTER LOADING



Logistics Engineering & Design

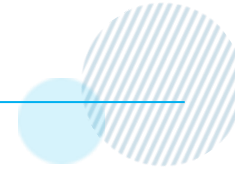
GAS TRIAL OF FSU before OCEAN TOWING **(CLIENT : NOVATEK / DSME)**

Cargo : LNG FSU 419.85M X 60M X 30M

Towing Draft : 7.1m



Logistics Engineering & Design ENGINEERING SERVICE

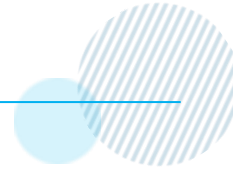


All Engineering for Roll On/Off, Float In/Out, Lifting On/Off Procedures

- **Stowage Plan**
- **Structure Analysis of CARGO**
- **Grillage Fabrication & Design**
- **Design for Reinforcements and Sea-fastenings**
- **Motion Response Analysis**
- **Jacking & Rotating Bogies of Cranes and Placing onto existing quay rails**

Logistics Engineering & Design

EQUIPMENT(INCL. CHARTERERING)



EQUIPMENT LIST

- TOWING TUG(국내 + 국외)
- SPECIAL BARGE
- DECK CARRIER(& SEMI SUBMERSIBLE)
- MARINE CRANE

※당사에서는 현재 20000P BARGE를 자선과 용선 형태로 보유하고 있으며, 향후 사업 확대에 따른 선대를 유지하고 미래의 해상운송사업에 대비하여 준비하고 있습니다.

aSpar























THANKS.