



# Pin Logix



# Pin Logix

Professional, Innovation & Networks



## Section 1 Introduction

- CEO's greeting

## Section 2 Scope of Work

- SCOPE OF WORK
- TARGET OF PIN

## Section 3 Performance

- PHOTO GALLERY

# Pin Logix



## Section 1. INTRODUCTION



Professional, Innovation & Networks

## Logistics Engineering & Design

### Pin Logix

Throughout the world, Pin Logix aims to maximize customer's opportunities by standardizing logistics data, realizing customers satisfaction through ultimate and accurate quotations, and ultimately securing competitiveness.

PIN stands for **P**rofessional **I**nnovation **N**etworks and will secure competitiveness in various forms of logistics in PIN's specific methods.

Pin Logix will continue to strive for customers satisfaction by building a global network and develop a new logistics system.

We will provide specialized Logistics Service for import & export cargo, bulk cargo, project cargo and marine & shipbuilding related heavy cargo.



Pin Logix

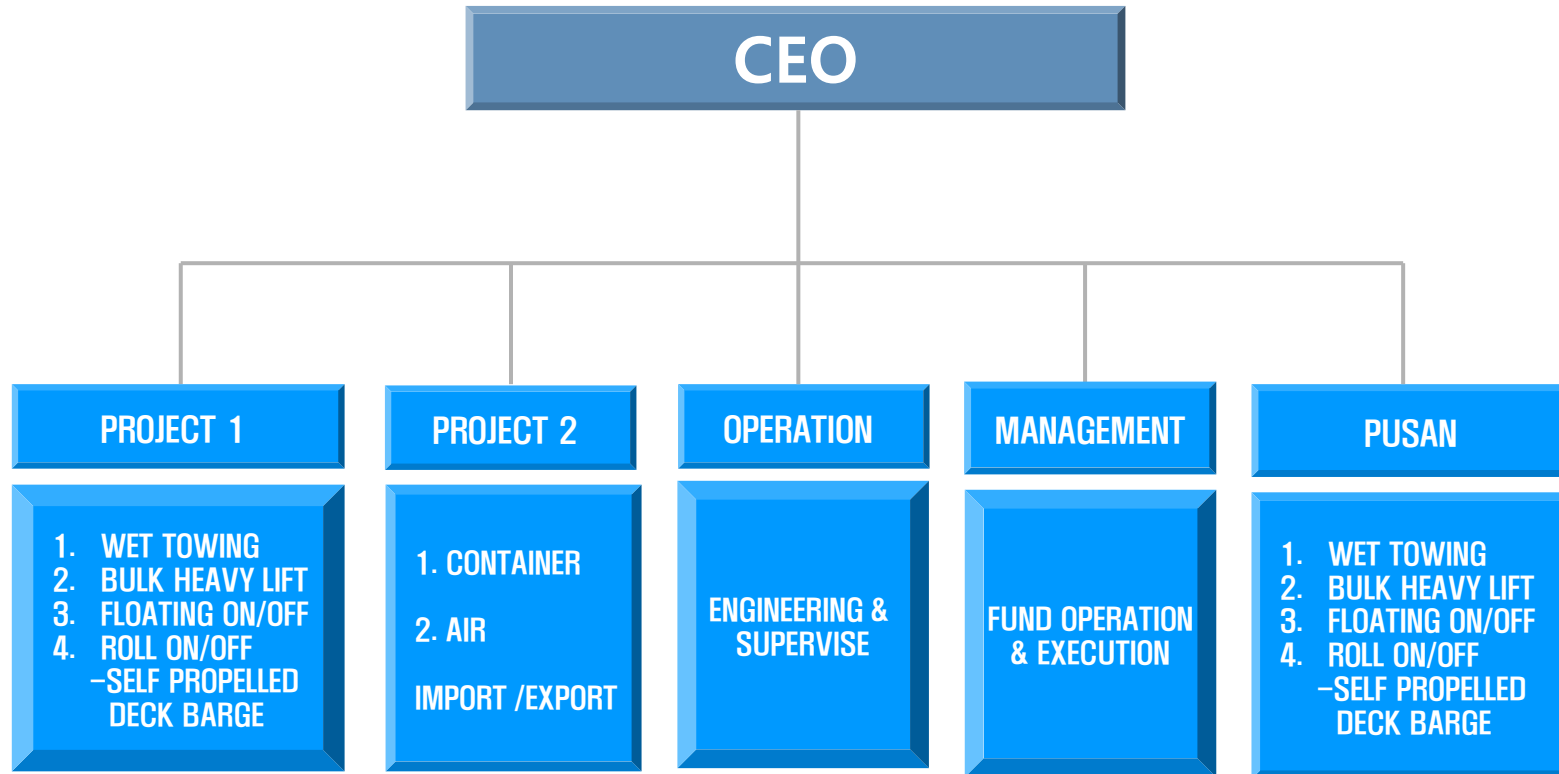


Justin Do / C.E.O of Pin Logix

# Logistics Engineering & Design

## ORGANIZATIN CHART

(HEAD OFFICE : SEOUL, BRANCH : PUSAN)



# Pin Logix



## Section 2. SCOPE OF WORK



Professional, Innovation & Networks

## Logistics Engineering & Design

### 핀의 자원 / SCOPE OF WORK



핀의 자원  
SCOPE OF  
WORK

International Network

Well Qualified Staff

Good Network with  
Domestic Partners

Project Logistics

Heavy Cargo Handling  
Know-How

Engineering

# Pin Logix



## Section 3. PERFORMANCE



Professional, Innovation & Networks

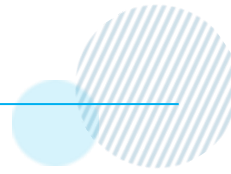
# Logistics Engineering & Design

## SANDWICH PANEL



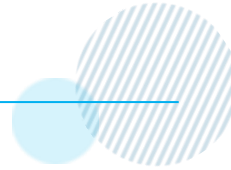
# Logistics Engineering & Design

## STEEL STRUCTURE



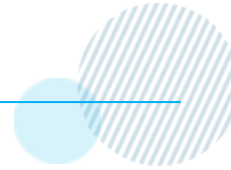
# Logistics Engineering & Design

## STEEL COIL



# Logistics Engineering & Design

## MANHOLE



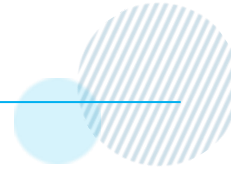
# Logistics Engineering & Design

## CONSTRUCTION MATERIALS FOR FORMWORK



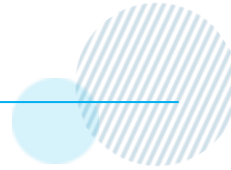
# Logistics Engineering & Design

## CABLE



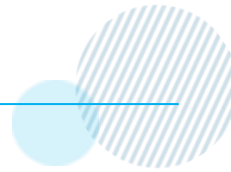
# Logistics Engineering & Design

## STEEL PIPE



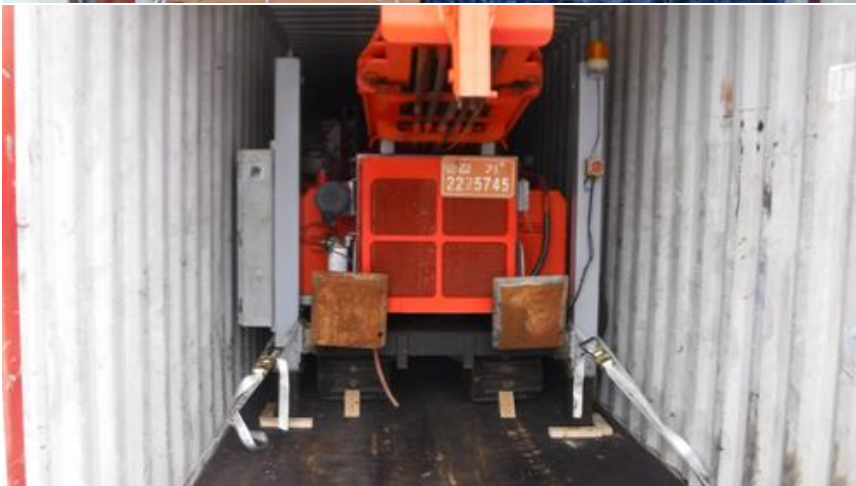
# Logistics Engineering & Design

## DG CARGO



# Logistics Engineering & Design

## CONSTRUCTION EQUIPMENTS



# Logistics Engineering & Design

## CONSTRUCTION EQUIPMENTS



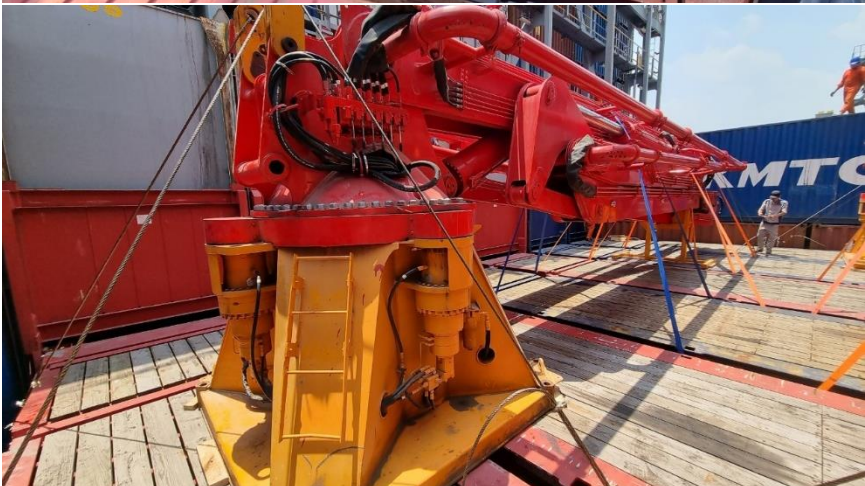
# Logistics Engineering & Design

## CONSTRUCTION EQUIPMENTS



# Logistics Engineering & Design

## CONTAINER BB작업



# Logistics Engineering & Design

## CABLE FOR BRIDGE



# Logistics Engineering & Design

## CONSTRUCTION EQUIPMENTS



# Logistics Engineering & Design

## CONSTRUCTION EQUIPMENTS



# Logistics Engineering & Design

## SPECIAL VEHICLE



# Logistics Engineering & Design

## MACHINERY



# Logistics Engineering & Design

## CONSTRUCTION EQUIPMENTS



# Logistics Engineering & Design

## CONSTRUCTION EQUIPMENTS



# Logistics Engineering & Design



**THANKS.**